

DO NOT CLEAR FROM APRIL 1 TO OCTOBER 15 CURV
PI 5

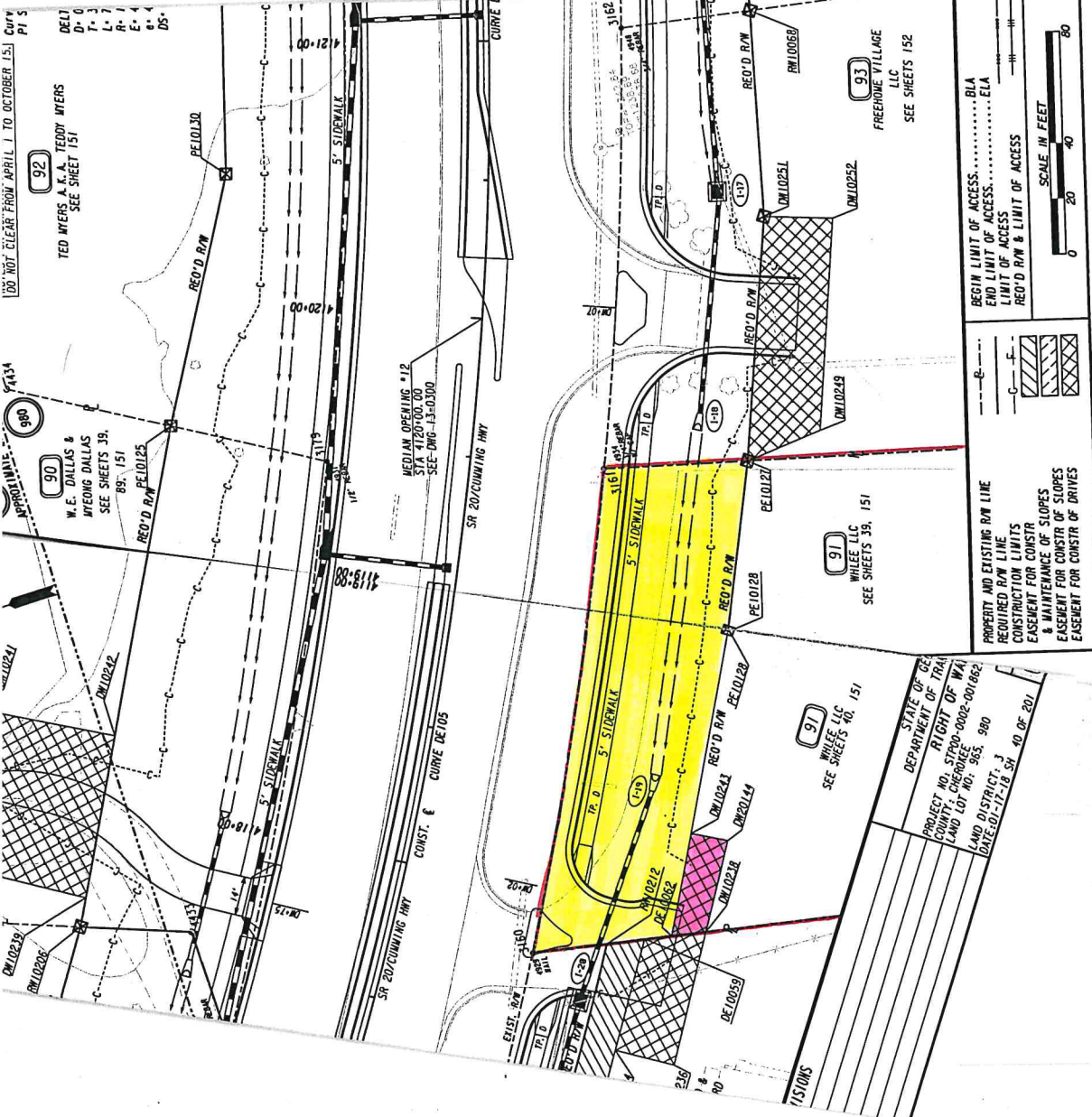
DEL1
D-0
T-3
L-7
R-7
E-4
O-4
DS-

92
TED MYERS A.K.A. TEDDY MYERS
SEE SHEET 151

90
W.E. DALLAS &
AFENDING DALLAS
SEE SHEETS 39,
89, 151

91
WHEELER LLC
SEE SHEETS 39, 151

93
FREEHOME VILLAGE
LLC
SEE SHEETS 152



---	BEGIN LIMIT OF ACCESS.....BLA
---	END LIMIT OF ACCESS.....ELA
---	LIMIT OF ACCESS
---	REQ'D R/W & LIMIT OF ACCESS

---	PROPERTY AND EXISTING R/W LINE
---	REQUIRED R/W LINE
---	CONSTRUCTION LIMITS
---	EASEMENT FOR CONSTR
---	EASEMENT FOR CONSTR OF SLOPES
---	EASEMENT FOR CONSTR OF DRIVES



STATE OF TEXAS
DEPARTMENT OF TRANSPORTATION
PROJECT NO. STR90-0002-001862
COUNTY: TARRANT
LAND LOT NO: 965, 980
LAND DISTRICT 3
DATE: 01-17-18
SD 40 OF 201

90

W. E. DALLAS & MYEONG DALLAS
CONTINUED

PAR 90 - Driveway Easement REQ'D DRWY. EASM'T. DE13077

PNT	OFFSET/	STATION/	ALIGNMENT
DW10239	109.78 L	4117+60.00	SR20
DW10240	164.00 L	4117+60.00	SR20
DW10241	164.00 L	4118+25.00	SR20
DW10242	112.38 L	4118+25.00	SR20
DW10239	109.78 L	4117+60.00	SR20

91

WHLLE LLC
SEE SHEETS 39, 40

PAR 91 - Req'd REQ'D R/W DE10071

PNT	OFFSET/ DIST	STATION/ BEARING	ALIGNMENT
3160	51.70 R	4117+78.65	SR20
ARC LENGTH = 178.48			
CHORD BEAR = S 63°39'55.3" E			
LNTH CHORD = 178.37			
RADIUS = 1525.27			
DEGREE = 3°45'23.2"			
3161	48.44 R	4119+50.50	SR20
	52.14	S 14°52'59.9" W	
PE10127	100.00 R	4119+57.84	SR20
	62.28	N 65°27'14.1" W	
PE10128	100.00 R	4119+00.00	SR20
	113.16	N 61°32'05.7" W	
PE10126	99.35 R	4117+94.87	SR20
	50.65	N 10°59'55.4" E	
3160	51.70 R	4117+78.65	SR20
REQD R/W	= 8754.87	SF	
REQD R/W	= 0.201	ACRES	
REMAINDER	= +/- 3.0	ACRES	

TTL: 3.2017-AC

PAR 91 - Driveway Easement REQ'D DRWY. EASM'T. DE13078

PNT	OFFSET/	STATION/	ALIGNMENT
DW10238	111.00 R	4117+98.66	SR 20
PE10126	99.35 R	4117+94.87	SR 20
DW10243	98.55 R	4118+30.00	SR 20
DW10244	112.00 R	4118+30.00	SR 20
DW10238	111.00 R	4117+98.66	SR 20

DATE	REVISIONS	DATE
1/8/19	REVISED EASEMENT ON PARCEL 89	
1/8/19	REVISED R/W AND REMOVED EASMT ON PARCELS 90, 91, 92	
3/22/19	REMOVED DWY EASMT AND ADDED EASMT FOR PARCEL 89	
3/22/19	REVISED DWY EASMT FOR PARCEL 91	